

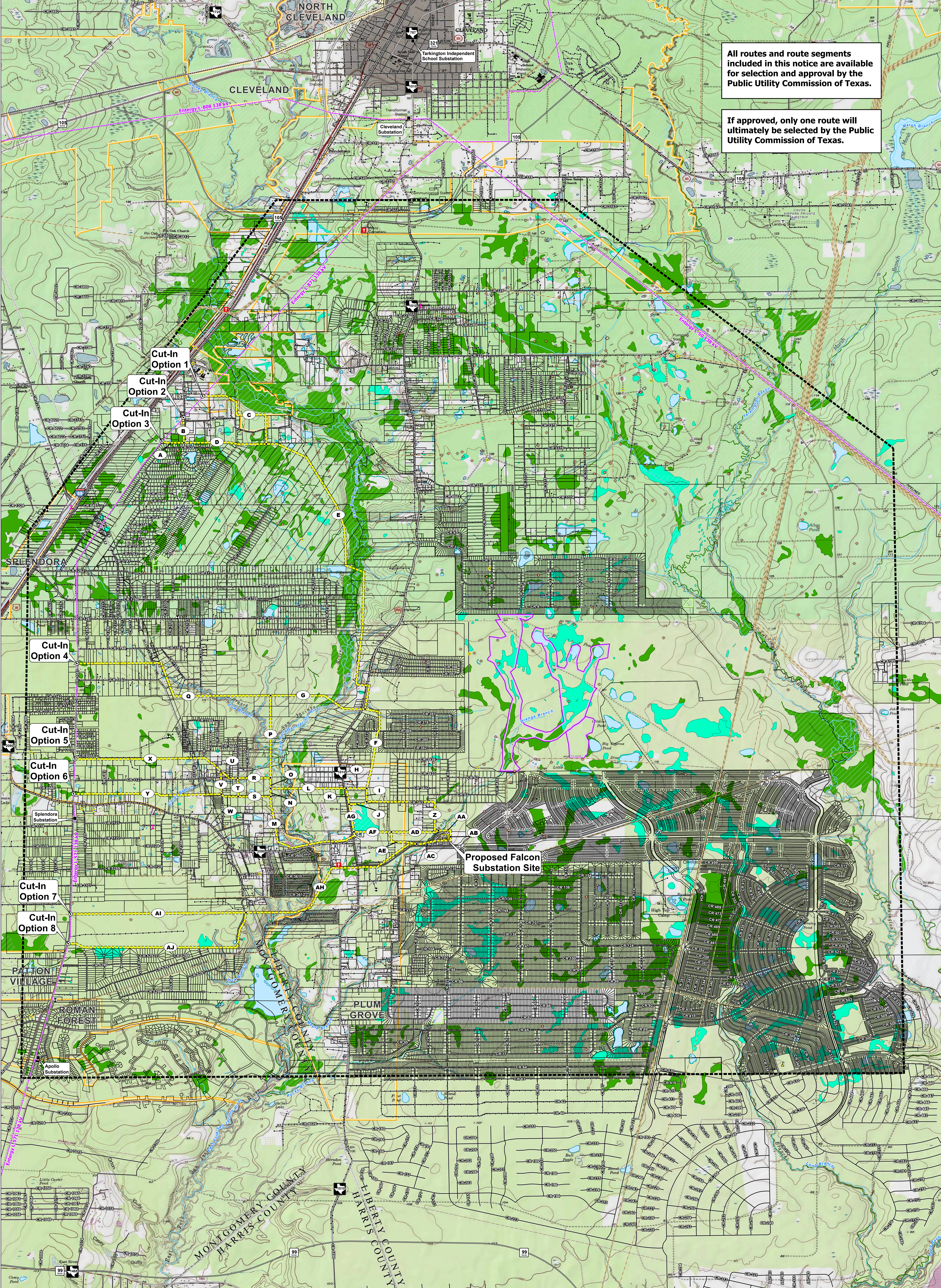
FALCON 138 kV SUBSTATION AND TRANSMISSION LINE PROJECT
ENVIRONMENTAL CONSTRAINTS AND LAND USE FEATURES IN THE VICINITY OF THE PRELIMINARY ALTERNATIVE SEGMENTS

TOPOGRAPHIC BASE

PRELIMINARY AND SUBJECT TO CHANGE

All routes and route segments included in this notice are available for selection and approval by the Public Utility Commission of Texas.

If approved, only one route will ultimately be selected by the Public Utility Commission of Texas.



Project Features

- Alternative cut-in location
- Preliminary alternative segment, node, and label
- Proposed Falcon substation site boundary
- ▭ Study area boundary

Existing Utility Features

- Existing Entergy substation
- Existing Entergy 138 kV transmission line
- Existing Entergy distribution power line

Land Use Features

- ⚓ School
- ✝ Church
- Ⓜ Communication tower
- Water well
- Oil/Gas well
- Oil/Gas pipeline

Transportation Features

- ✈ Private airstrip and runway
- Interstate highway
- US highway
- State highway
- FM road
- County / Local road
- Railroad

Cultural Features

- Cemetery

Hydrologic Features

- NHD river/stream
- NHD waterbody
- FEMA 100-year floodplain

NWI mapped wetland

- Freshwater emergent wetland
- Freshwater forested/shrub wetland

Administrative Boundaries

- Parcel boundary
- City limit
- County boundary
- Bayou Land Conservancy Preserve

Base Map: USA Topographic Map
 Some data layers including tract boundaries, roads, and oil/gas pipelines obtained from third-party sources may be inaccurate to varying degrees. These data have not been corrected in all locations and should be used as a general guide to feature locations only. Digitization of proposed transmission line segments was performed based on aerial interpretation of these features.
 Some legend symbols are enlarged for easier identification.
 Some features are exaggerated to better identify paralleling opportunities.
 Sensitive cultural resource data are not shown on this map as these data are not to be reproduced, distributed, or released to the public.

